

ORIGINAL IGBO CALENDAR



2018

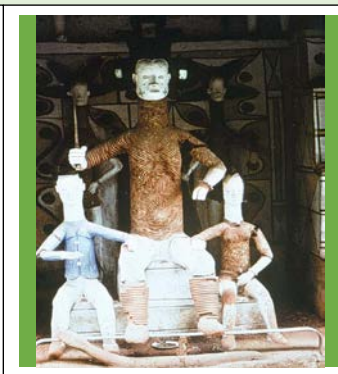
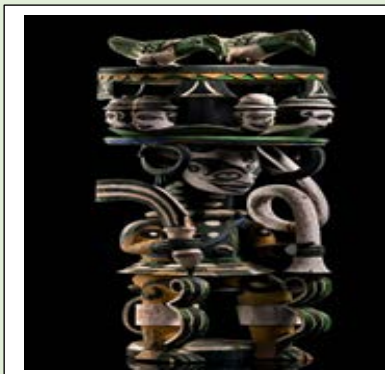
OWA MBU: ARO OFUU NDI IGBO

OWA IZIZI NA ARO NKE NDI IGBO N'IME ARO 2018

EKE (Oku)	ORIE (Miri)	AFO (Ala)	NKWO (Ikuku)	EKE (Fire)	ORIE (Water)	AFO (Earth)	NKWO (Air)
Eke days are Igbo sacred days							
		1	2	3	4	5	6 TUE
7 WED	8 THU	9 FRI	10 SAT	11 SUN	12 MON	13 TUE	14 WED
15 THU New Moon 10.6pm	16 FRI	17 SAT	18 SUN	19 MON	20 TUE	21 WED	22 THU
23 FRI	24 SAT	25 SUN	26 MON	27 TUE	28 WED	IGBO MONTH	ENDS!!!

February 2018: Western Calendar

Mon	Tue	Wed	Thu	Fri	Sat	Sun
			1	2	3	4
5	6	7	8	9	10	11
12	13	14	15	16	17	18
19	20	21	22	23	24	25
26	27	28				



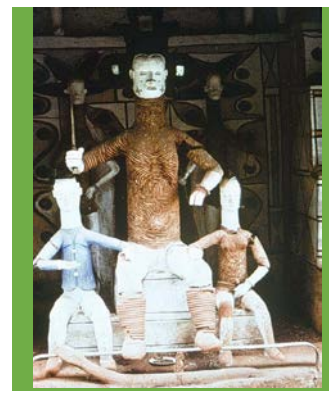
OWA ABUA

OWA NKE ABO NA ARO NKE NDI IGBO NA ARO 2018

EKE (Ọku)	ORIE (Miri)	AFO (Ala)	NKWO (Ikuku)	EKE (Fire)	ORIE (Water)	AFO (Earth)	NKWO (Air)
				Eke days are Igbo sacred days			
						1 THU	2 FRI
3 SAT	4 SUN	5 MON	6 TUE	7 WED	8 THU	9 FRI	10 SAT
11 SUN	12 MON	13 TUE	14 WED	15 THU	16 FRI	17 SAT	18 SUN
19 MON	20 TUE	21 WED	22 THU	23 FRI	24 SAT	25 SUN	26 MON
27 TUE	28 WED	IGBO	MONTH	ENDS!!!			

March 2018: Western Calendar

Mon	Tue	Wed	Thu	Fri	Sat	Sun
			1	2	3	4
5	6	7	8	9	10	11
12	13	14	15	16	17	18
19	20	21	22	23	24	25
26	27	28	29	30	31	



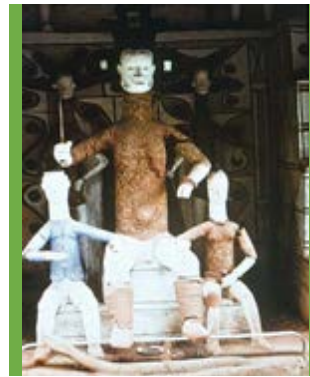
OWA IFE EKE

OWA NKE ATO NKE NDI IGBO NA ARO 2018

EKE (Ọku)	ORIE (Miri)	AFO (Ala)	NKWO (Ikuku)	EKE (Fire)	ORIE (Water)	AFO (Earth)	NKWO (Air)
Eke days are Igbo sacred days		Thu 29 March 2018 Western Calendar	Fri 30 March 2018 Western Calendar	Sat 31 March 2018 Western Calendar			T
		1	2	3	4 (Sun 1)	5 (Mon 2)	6 (Tue 3)
7 (Wed 4)	8 (Thu5)	9 (Fri6)	10 (Sat7)	11 (Sun8)	12 (Mon9)	13 (Tue10)	14 (Wed11)
15 (Thu12)	16 (Fri13)	17 (Sat14)	18 (Sun15)	19 (Mon16)	20 (Tue17)	21 (Wed18)	22 (Thu19)
23 (Fri20)	24 (Sat21)	25 (Sun22)	26 (Mon23)	27 (Tue24)	28 (Wed25)	28 (Thu26)	IGBO
MONTH	ENDS!!!						

April 2018: Western Calendar

Mon	Tue	Wed	Thu	Fri	Sat	Sun
						1
2	3	4	5	6	7	8
9	10	11	12	13	14	15
16	17	18	19	20	21	22
23	24	25	26	27	28	29
30						



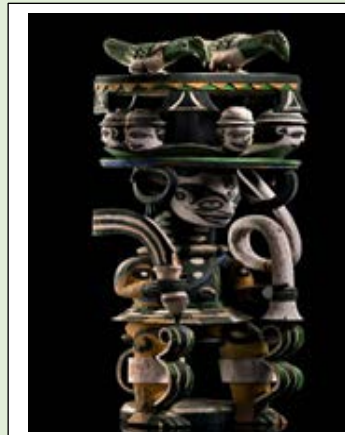
OWA ANO

OWA NKE ANO NKE NDI IGBO NA ARO 2018

EKE (Ọku)	ORIE (Miri)	AFO (Ala)	NKWO (Ikuku)	EKE (Fire)	ORIE (Water)	AFO (Earth)	NKWO (Air)
Eke days are Igbo sacred days			Fri 27 April 18 Western Calendar	Sat 28 April Western Calendar	Sun 29 April Western Calendar	Mon 30 April Western Calendar	
			1	2	3	4	5 (TUE 1)
6 (Wed 2)	7 (Thu 3)	8 (Fri4)	9 (Sat 5)	10 (Sun6)	11 (Mon 7)	12 (Tue 8)	13 (Wed 9)
14 (Thu 10)	15 (Fri11)	16 (Sat 12)	17 (Sun 13)	18 (Mon14)	19 (Tue 15)	20 (Wed 16)	21 (Thu 17)
22 (Fri 18)	23 (Sat 19)	24 (Sun 20)	25 (Mon 21)	26 (Tue 22)	27 (Wed 23)	28 (Thu 24)	IGBO
MONTH	ENDS!!!!						

May 2018: Western Calendar

Mon	Tue	Wed	Thu	Fri	Sat	Sun
	1	2	3	4	5	6
7	8	9	10	11	12	13
14	15	16	17	18	19	20
21	22	23	24	25	26	27
28	29	30	31			



OWA AGWU

OWA NKE ISE NKE NDI IGBO NA ARO 2018

EKE (Ọku)	ORIE (Miri)	AFO (Ala)	NKWO (Ikuku)	EKE (Fire)	ORIE (Water)	AFO (Earth)	NKWO (Air)
Eke days are Igbo sacred days							
Wed 30 May 2018 Western Calendar	Thu 31 May 2018 Western Calendar		Fri 25 May 2018 Western Calendar	Sat 26 May 2018 Western Calendar	Sun 27 May 2018 Western Calendar	Mon 28 May 2018 Western Calendar	Tue 29 May 2018 Western Calendar
			1	2	3	4	5
6	7	8 (Fri 1)	9 (Sat 2)	10 (Sun 3)	11 (Mon 4)	12 (Tue 5)	13 (Wed 6)
14 (Thu 7)	15 (Fri 8)	16 (Sat 9)	17 (Sun 10)	18 (Mon 11)	19 (Tue 12)	20 (Wed 13)	21 (Thu 14)
22 (Fri 15)	23 (Sat 16)	24 (Sun 17)	25 (Mon 18)	26 (Tue 19)	27 (Wed 20)	28 (Thu 21)	IGBO
MONTH	ENDS!!!!						

June 2018: Western Calendar

Mon	Tue	Wed	Thu	Fri	Sat	Sun
				1	2	3
4	5	6	7	8	9	10
11	12	13	14	15	16	17
18	19	20	21	22	23	24
25	26	27	28	29	30	



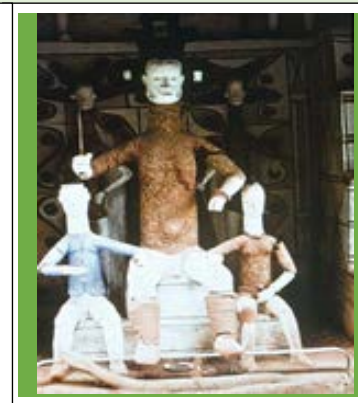
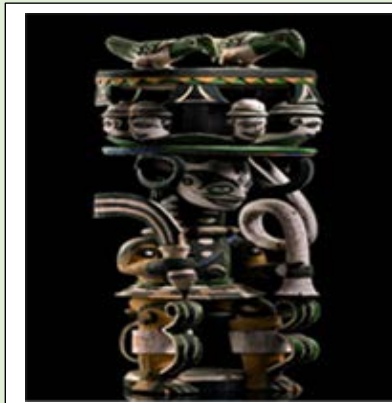
OWA IFEJIOKU

OWA NKE ISII NKE NDI IGBO NA ARO 2018

EKE (Ọku)	ORIE (Miri)	AFO (Ala)	NKWO (Ikuku)	EKE (Fire)	ORIE (Water)	AFO (Earth)	NKWO (Air)
Eke days are Igbo sacred days			Fri 22 June 2018 Western Calendar 1	23 June 2018 Western Calendar 2	24 June 2018 Western Calendar 3	25 June 2018 Western Calendar 4	26 June 2018 Western Calendar 5
27 June 2018 Western Calendar	28 June 2018 Western Calendar	29 June 2018 Western Calendar	30 June 2018 Western Calendar				
6 (Sun 1 July)	7 (Mon 2 July)	8 (Tue 3 July)	9 (Wed 4 July)	10 (Thu 5 July)	11 (Fri 6 July)	12 (Sat 7 July)	13 (Sun 8 July)
14 (Mon 9 July)	15 (Tue 10 July)	16 (Wed 11 July)	17 (Thu 12 July)	18 (Fri 13 July)	19 (Sat 14 July)	20 (Sun 15 July)	21 (Mon 16 July)
22 (Tue 17 July)	23 (Wed 18 July)	24 (Thu 19 July)	25 (Fri 20 July)	26 (Sat 21 July)	27 (Sun 22 July)	28 (Mon 23 July)	IGBO
MONTH	ENDS!!!!						

July 2018: Western Calendar

Mon	Tue	Wed	Thu	Fri	Sat	Sun
						1
2	3	4	5	6	7	8
9	10	11	12	13	14	15
16	17	18	19	20	21	22
23	24	25	26	27	28	29
30	31					



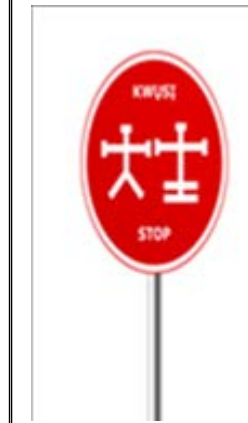
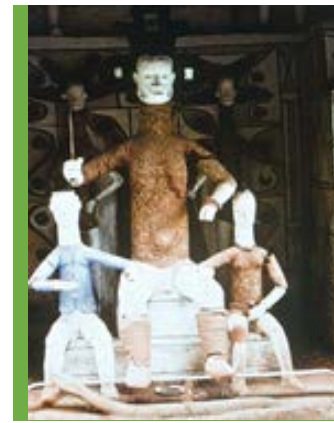
OWA ALOM CHI

OWA NKE ASAA NKE NDI IGBO NA ARO 2018

EKE (Ọku)	ORIE (Miri)	AFO (Ala)	NKWO (Ikuku)	EKE (Fire)	ORIE (Water)	AFO (Earth)	NKWO (Air)
				Eke days are Igbo sacred days			24 July 2018 Western Calendar 1 (Tue 24 July)
25 July 2018 Western Calendar	26 July 2018 Western Calendar	27 July 2018 Western Calendar	28 July 2018 Western Calendar	29 July 2018 Western Calendar	30 July 2018 Western Calendar	31 July 2018 Western Calendar	
2 (Wed 25 July)	3 (Thu 26 July)	4 (Fri 27 July)	5 (Sat 28 July)	6 (Sun 29 July)	7 (Mon 30 July)	8 (Tue 31 July)	9 (Wed 1 Aug)
10 (Thu 2 Aug)	11 (Fri 3 Aug)	12 (Sat 4 Aug)	13 (Sun 5 Aug)	14 (Mon 6 Aug)	15 (Tue 7 Aug)	16 (Wed 8 Aug)	17 (Thu 9 Aug)
18 (Fri 10 Aug)	19 (Sat 11 Aug)	20 (Sun 12 Aug)	21 (Mon 13 Aug)	22 (Tue 14 Aug)	23 (Wed 15 Aug)	24 (Thu 16 Aug)	25 (Fri 17 Aug)
26 (Sat 18 Aug)	27 (Sun 19 Aug)	28 (Mon 20 Aug)	IGBO	MONTH	ENDS!!!!		

August 2018: Western Calendar

Mon	Tue	Wed	Thu	Fri	Sat	Sun
		1	2	3	4	5
6	7	8	9	10	11	12
13	14	15	16	17	18	19
20	21	22	23	24	25	26
27	28	29	30	31		



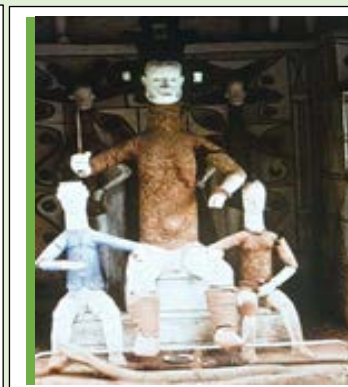
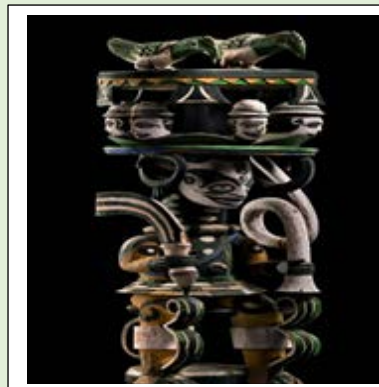
OWA ILO MMUO

OWA NKE ASATO NKE NDI IGBO NA ARO 2018

EKE (Ọku)	ORIE (Miri)	AFO (Ala)	NKWỌ (Ikuku)	EKE (Fire)	ORIE (Water)	AFO (Earth)	NKWỌ (Air)
Eke days are Igbo sacred days			21 August 2018 Western Calendar 1	22 August 2018 Western Calendar 2	23 August 2018 Western Calendar 3	24 August 2018 Western Calendar 4	25 August 2018 Western Calendar 5
26 August 2018 Western Calendar 6	27 August 2018 Western Calendar 7	28 August 2018 Western Calendar 8	29 August 2018 Western Calendar 9	30 August 2018 Western Calendar 10	31 August 2018 Western Calendar 11	12 (Sat 1 Sept)	13 (Sun 2 Sept)
14 (Mon 3 Sept)	15 (Tue 4 Sept)	16 (Wed 5 Sept)	17 (Thu 6 Sept)	18 (Fri 7 Sept)	19 (Sat 8 Sept)	20 (Sun 9 Sept)	21 (Mon 10 Sept)
22 (Tue 11 Sept)	23 (Wed 12 Sept)	24 (Thu 13 Sept)	24 (Fri 14 Sept)	26 (Sat 15 Sept)	27 (Sun 16 Sept)	28 (Mon 17 Sept)	IGBO
MONTH	ENDS!!!!						

September 2018: Western Calendar

Mon	Tue	Wed	Thu	Fri	Sat	Sun
					1	2
3	4	5	6	7	8	9
10	11	12	13	14	15	16
17	18	19	20	21	22	23
24	25	26	27	28	29	30



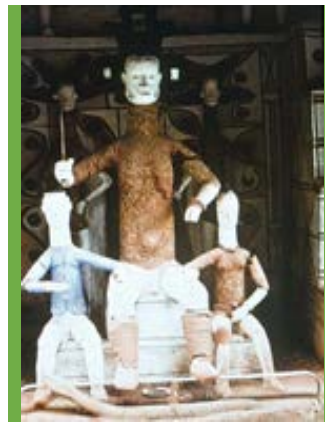
OWA ANA

OWA ITEGHETE NKE NDI IGBO NA ARO 2018

EKE (Ọku)	ORIE (Miri)	AFO (Ala)	NKWO (Ikuku)	EKE (Fire)	ORIE (Water)	AFO (Earth)	NKWO (Air)
Eke days are Igbo sacred days			18 Sept 2018 Western Calendar 1	19 September 2018 Western Calendar 2	20 September 2018 Western Calendar 3	21 September 2018 Western Calendar 4	22 September 2018 Western Calendar 5
23 September 2018 Western Calendar	24 September 2018 Western Calendar	25 September 2018 Western Calendar	26 September 2018 Western Calendar	27 September 2018 Western Calendar	28 September 2018 Western Calendar	29 September 2018 Western Calendar	30 September 2018 Western Calendar
6 (Mon 1 Oct)	7 (Tue 2 Oct)	8 (Wed 3 Oct)	9 (Thu 4 Oct)	10 (Fri 5 Oct)	11 (Sat 6 Sept)	12 (Sun 7 Oct)	13 (Mon 8 Oct)
14 (Tue 9 Oct)	15 (Wed 10 Oct)	16 (Thu 11 Oct)	17 (Fri 12 Oct)	18 (Sat 13 Oct)	19 (Sun 14 Oct)	20 (Mon 15 Oct)	21 (Tue 16 Oct)
22 (Wed 17 Oct)	23 (Thu 18 Oct)	24 (Fri 19 Oct)	25 (Sat 20 Oct)	26 (Sun 21 Oct)	27 (Mon 22 Oct)	28 (Wed 23 Oct)	IGBO
MONTH	ENDS!!!!						

October 2018: Western Calendar

Mon	Tue	Wed	Thu	Fri	Sat	Sun
1	2	3	4	5	6	7
8	9	10	11	12	13	14
15	16	17	18	19	20	21
22	23	24	25	26	27	28
29	30	31				



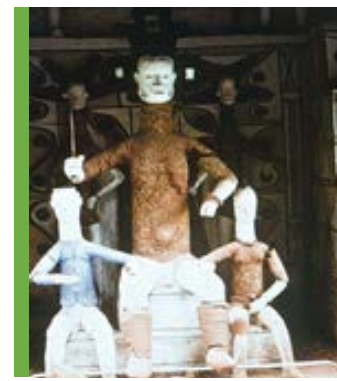
OWA OKIKE

OWA IRI NKE NDI IGBO NA ARO 2018

EKE (Ọku)	ORIE (Miri)	AFO (Ala)	NKWO (Ikuku)	EKE (Fire)	ORIE (Water)	AFO (Earth)	NKWO (Air)
Eke days are Igbo sacred days							
			24 October 2018 Western Calendar	25 October 2018 Western Calendar	26 October 2018 Western Calendar	27 October 2018 Western Calendar	28 October 2018 Western Calendar
29 October 2018 Western Calendar	30 October 2018 Western Calendar	31 October 2018 Western Calendar	1 (Wed 24 Oct)	2 (Thu 25 Oct)	3 (Fri 26 Oct)	4 (Sat 27 Oct)	5 (Sun 28 Oct)
6 (Mon 29 Oct)	7 (Tue 30 Oct)	8 (Wed 31 Oct)	9 (Thu 1 Nov)	10 (Fri 2 Nov)	11 (Sat 3 Nov)	12 (Sun 4 Nov)	13 (Mon 5 Nov)
14 (Tue 6 Nov)	15 (Wed 7 Nov)	16 (Thu 8 Nov)	17 (Fri 9 Nov)	18 (Sat 10 Nov)	19 (Sun 11 Nov)	20 (Mon 12 Nov)	21 (Tue 13 Nov)
22 (Wed 14 Nov)	23 (Thu 15 Nov)	24 (Fri 16 Nov)	25 (Sat 17 Nov)	26 (Sun 18 Nov)	27 (Mon 19 Nov)	28 (Tue 20 Nov)	IGBO
MONTH	ENDS!!!!						

November 2018: Western Calendar

Mon	Tue	Wed	Thu	Fri	Sat	Sun
			1	2	3	4
5	6	7	8	9	10	11
12	13	14	15	16	17	18
19	20	21	22	23	24	25
26	27	28	29	30		



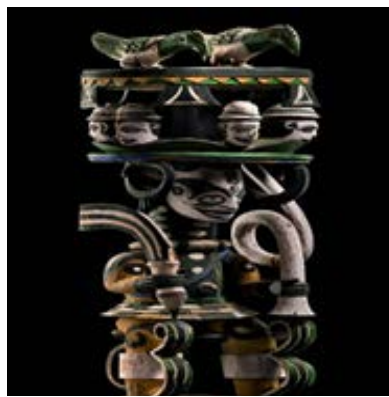
OWA AJANI

OWA IRI NA OFU NDI IGBO NA ARO 2018

EKE (Ọku)	ORIE (Miri)	AFO (Ala)	NKWO (Ikuku)	EKE (Fire)	ORIE (Water)	AFO (Earth)	NKWO (Air)
Eke days are Igbo sacred days			21 Nov 2018 Western Calendar 1	22 Nov 2018 Western Calendar 2	23 Nov 2018 Western Calendar 3	24 Nov 2018 Western Calendar 4	25 Nov 2018 Western Calendar 5
26 Nov 2018 Western Calendar	27 Nov 2018 Western Calendar	28 Nov 2018 Western Calendar	29 Nov 2018 Western Calendar	30 Nov 2018 Western Calendar			
6 (Mon 26 Nov)	7 (Tue 27 Nov)	8 (Wed 28 Nov)	9 (Thu 29 Nov)	10 (Fri 30 Nov)	11 (Sat 1 Dec)	12 (Sun 2 Dec)	13 (Mon 3 Dec)
14 (Tue 4 Dec)	15 (Wed 5 Dec)	16 (Thu 6 Dec)	17 (Fri 7 Dec)	18 (Sat 8 Dec)	19 (Sun 9 Dec)	20 (Mon 7 Dec)	21 (Tue 11 Dec)
22 (Wed 12 Dec)	23 (Thu 13 Dec)	24 (Fri 14 Dec)	25 (Sat 15 Dec)	26 (Sun 16 Dec)	27 (Mon 17 Dec)	28 (Tue 18 Dec)	IGBO
MONTH	ENDS!!!!						

December 2018: Western Calendar

Mon	Tue	Wed	Thu	Fri	Sat	Sun
					1	2
3	4	5	6	7	8	9
10	11	12	13	14	15	16
17	18	19	20	21	22	23
24	25	26	27	28	29	30
31						



OWA EDE AJANI

OWA IRI NA ABUA NDI IGBO NA ARO 2018

EKE (Ọku)	ORIE (Miri)	AFO (Ala)	NKW3O (Ikuku)	EKE (Fire)	ORIE (Water)	AFO (Earth)	NKW3O (Air)
Eke days are Igbo sacred days			19 December 2018 Western Calendar 1	20 December 2018 Western Calendar 2	21 December 2018 Western Calendar 3	22 December 2018 Western Calendar 4	23 December 2018 Western Calendar 5
24 December 2018 Western Calendar 6	25 December 2018 Western Calendar 7	26 December 2018 Western Calendar 8	27 December 2018 Western Calendar 9	28 December 2018 Western Calendar 10	29 December 2018 Western Calendar 11	30 December 2018 Western Calendar 12	31 December 2018 Western Calendar 13
14 (Tue 1 Jan)	15 (Wed 2 Jan)	16 (Thu 3 Jan)	17 (Fri 4 Jan)	18 (Sat 5 Jan)	19 (Sun 6 Jan)	20 (Mon 7 Jan)	21 (Tue 8 Jan)
22 (Wed 9 Jan)	23 (Thu 10 Jan)	24 (Fri 11 Jan)	25 (Sat 12 Jan)	26 (Sun 13 Jan)	27 (Mon 14 Jan)	28 (Tue 15 Jan)	IGBO
MONTH	ENDS!!!!						

January 2019: Western Calendar

Mon	Tue	Wed	Thu	Fri	Sat	Sun
	1	2	3	4	5	6
7	8	9	10	11	12	13
14	15	16	17	18	19	20
21	22	23	24	25	26	27
28	29	30	31			



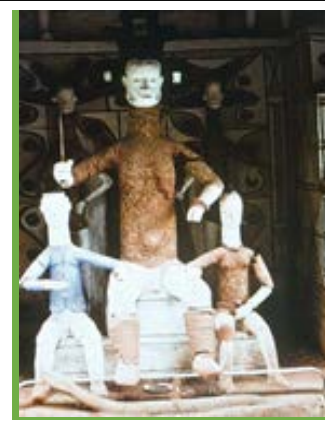
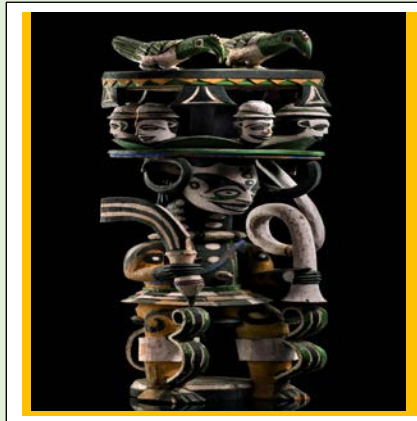
OWA UZO ALUKWUSI: (NGWUSI ARO IGBO)

OWA IRI NA ATO NDI IGBO NA ARO 2018

EKE (Ọku)	ORIE (Miri)	AFO (Ala)	NKWO (Ikuku)	EKE (Fire)	ORIE (Water)	AFO (Earth)	NKWO (Air)
Eke days are Igbo sacred days							
			16 January 2019 Western Calendar 1	17 January 2019 Western Calendar 2	18 January 2018 Western Calendar 3	19 January 2018 Western Calendar 4	20 January 2018 Western Calendar 5
21 January 2018 Western Calendar 6	22 January 2018 Western Calendar 7	23 January 2018 Western Calendar 8	24 January 2018 Western Calendar 9	25 January 2018 Western Calendar 10	26 January 2018 Western Calendar 11	27 January 2018 Western Calendar 12	28 January 2018 Western Calendar 13
29 January 2018 Western Calendar 14	30 January 2018 Western Calendar 15	31 January 2018 Western Calendar 16	17 (Fri 1 Feb)	18 (Sat 2 Feb)	19 (Sun 3 Feb)	20 (Mon 4 Feb)	21 (Tue 5 Feb)
22 (Wed 6 Feb)	23 (Thu 7 Feb)	24 (Thu 8 Feb)	25 (Thu 9 Feb)	26 (Thu 10 Feb)	27 (Thu 11 Feb)	28 (Thu 12 Feb)	IGBO
MONTH	ENDS!!!!						

February 2019: Western Calendar

Mon	Tue	Wed	Thu	Fri	Sat	Sun
				1	2	3
4	5	6	7	8	9	10
11	12	13	14	15	16	17
18	19	20	21	22	23	24
25	26	27	28			



NOTES

Aro Igbo and the Gregorian year 2018

- In this year, **Onwa Mbu** Igbo corresponds to February month of the Gregorian calendar and the days in Onwa Mbu Igbo aligned with that of Gregorian February month.
- **Onwa Abua** Igbo, starts on Afo same day as the Western / Gregoria calendar. Onwa Abua corresponds to Gregorian month of March, however when Igbo month ends on the **28th day of Orié** Wednesday, the Gregorian continues on till the Saturday the 31st, hence given them 3 more days to complete this month, please see the red highlighted **1 THU**.
- **Onwa Ato** Igbo which is **Onwa Ife Eke**, in this month Igbo Izu would travel three days ahead of the Western calendar on Afo day which corresponds to the Thursday 29th day of March. This meant that Igbo is three days ahead because the previous month ended on the 28th. Onwa Ife Eke corresponds to April month of Gregorian calendar. Onwa Ife Eke ends on the **28th day Afo** which corresponds to Thursday **26th April** meaning that Gregorian has four extra days to end their month while Uwa Izu is four days ahead, please see the red highlighted **4 (Sun 1)**.
- **Onwa Ano Igbo** will commence four days ahead and correspond to the Gregorian month of May. This Igbo month began on Nkwo on the 27th April. Igbo will conclude one Izu before the previous Gregorian month of April ended.

Onwa Ano Igbo is four days ahead and from the 5th day, corresponds to month of May. Onwa Ano Igbo ends on the **Afo 28th day** corresponding to Thursday **May 24th day of Western** calendar. This makes coming Igbo month 7 days ahead, please see highlighted **5** (TUE 1).

- **Onwa Ise Igbo, Onwa Agwu**, in this month Igbo Izu travels seven days ahead because whilst Igbo circled previous 28 days on the Western 24th day, Western calendar still has 7 more days to complete its journey. Onwa Agwu Igbo began on Nkwo Friday the 25th of May to end 28 days circle on Afo, **Thursday 21 June**. Onwa Agwu corresponds to last seven days of May plus first 21 days of June. First day of Western will fall on the 8th of Onwa Agwu, please see highlighted **8** (Fri 1).
- **Onwa Isii Igbo, Onwa Ifejioku** starts on Nkwo Friday 22 June and completes its **28 days Afo Mon 23 July**, it corresponds to July month of Western calendar whose first day as highlighted on **6** (Sun 1 July).
- **Onwa Asaa, Onwa Alom Chi** starts with extra days from July but corresponds to August the 8th month of Western / Gregorian calendar because it of more days in August, please see the calendar for more information.
- **Onwa Asato, Onwa Ilo Mmuo** corresponds to 9th month of September although it started with 11 days from the previous month of August, please see the calendar for more information.
- **Onwa Iteghete is Onwa Ani**, it corresponds to 10th month of October according to Western calendar, however like other IZU months, it carried 13 days from the previous month, please see **Onwa Ani** in the calendar for more information.

- **Onwa Iri Onwa Okike**, corresponds to the Western calendar month of November, it commences with 8 days from the previous October month and ran its 28 days circle to end on Afo Tue 20th November, please consult this month within the calendar for more information.
- **Onwa Iri n'ofu, onwa Ajani**, corresponds to December month of Western calendar though it begins with carry over from previous month of 10 days. It ends on Tue day 18th December an Afo day, please consult the month for more details.
- **Onwa Iri n'abua, onwa Ede Ajani**, aligns with Western calendar month of January. It commenced with 13 days carried over from the previous month and completes its 28 days journey on Afo day, Tue 15th January 2019.
- **Onwa Iri n'ato, Onwa Uzo Alukwusi**, is aligned with February month of 2019. It carried over from the previous December month 16 days. **Onwa Uzo Alukwusi** will run its **28 days circle to end on the Afo day which is Thursday 12 February 2019.**

How to use this calendar

1. You must not use this calendar the way you use the Western one
2. In the Calendar, the big bold black numbers are the Igbo days
3. The small numbers and dates shown on top of all Igbo months shows the number of days left for the Gregorian month to complete its circle.
4. Igbo month is 28 stable days whilst the Gregorian one shift from 28 to 31 days
5. Whilst Igbo month ends on 28th day, the Western one continues until it clocks either 30 to 31 days.
6. The Igbo month starts on the 29th day once it clocks 28 regardless of where this falls in Gregorian calendar
7. Igbo months and Western months only aligns every 112 years, the last was 2012.
8. Igbo first month, Onwa Mbu corresponds to Gregorian / Western February in year 2018
9. Igbo months are always behind so to find Onwa Abua for instance, look for third month of the Western calendar.
10. Most Igbo month commences before the Western calendar due to Igbo 28 days month circle
11. There is no evidence to suggest Igbo celebrate New Year day, this is a Western construct
12. However, Igbo celebrates every month independently
13. There is a festival on the 3rd Afo day welcoming the Aro Ofuu but note that this is not exactly the first day.

14. Igbo months circle between Afo and Nkwo which is when they are either starting or ending
15. This date may not always fall within the Onwa Mbu
16. It is not year 2018 for the Igbo who have been in existence for much more longer
17. 4 days makes an Igbo IZU, 91 IZU is contained in Igbo year. 28 days makes up Igbo Onwa / month, 364 days make up Igbo year. There are 13 months that make up ARO Igbo / Igbo year,

Time |



anwu/chi
sun/day



onwa
moon



afo
year



ubochi
day



taa
today



izu
week



échi
tomorrow



nnyafu
yesterday

Origin

sun
pictograph

moon
logograph

moon +
land

top +
sun

sun +
radical

four
(cardinal) +
enclosure

sun +
legs

today +
tree leaves
(direction
indication, 'behind')

References

1. Anon. (n. d.). Kwusi / stop. Available: <http://2.bp.blogspot.com/-UHC18He256I/TmGV2OVK7HI/AAAAAAAAAic/3lgUMeJPBN4/s1600/stop.jpg>. Last accessed 20/01/2018.

2. Anon. (n. d.). Ndi n'abia abia. Available: <https://tse2.mm.bing.net/th?id=OIP.tKBPD7iiGWX0bf7arjhFswHaDZ&pid=15.1&P=0&w=341&h=157>. Last accessed 20/1/2018.
3. Anon. (n. d.). Time. Available: http://2.bp.blogspot.com/-irGe6ByrPCs/Tol6pergBul/AAAAAAAAAnI/rOS7o_RKDpA/s1600/time.png. Last accessed 20/01/2018.
4. Anon. (n. d.). 86264a9a5e34870f24e072938d9aba7b.jpg. Available: <https://i.pinimg.com/564x/86/26/4a/86264a9a5e34870f24e072938d9aba7b.jpg>. Last accessed 19 / 01 / 2018.
5. Anon. (n. d.). tumblr_lv2rjhity1qc3j1s.jpg. Available: 5. http://media.tumblr.com/tumblr_lv2rjhity1qc3j1s.jpg. Last accessed 19 / 01 / 2018.
6. Anon. (2018). When is New Moon in February 2018? Available: <https://days.to/when-is/new-moon/2018/2>. Last accessed 20/1/2018.
7. Eze Silver Ibenye. (Aug 24, 2015). *Izu Igbo – Days of the Week*. Available: <https://igbocalendar.com/izu-igbo-days-of-the-week>. Last accessed 07/02/2018.